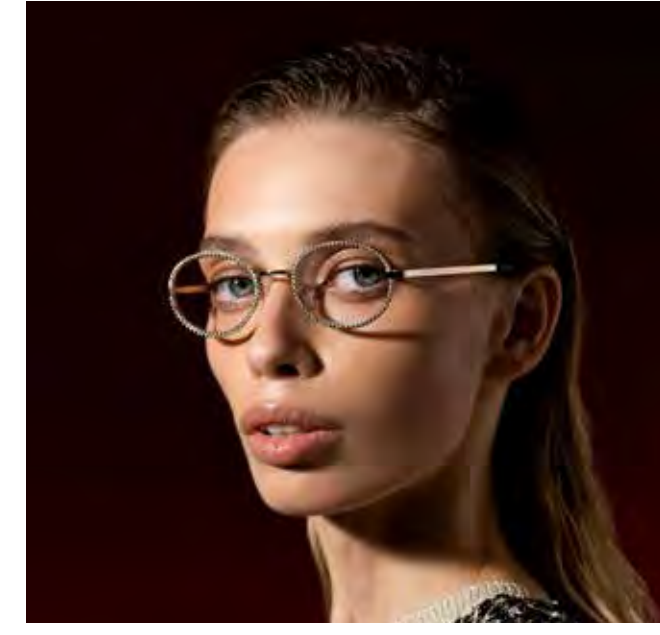
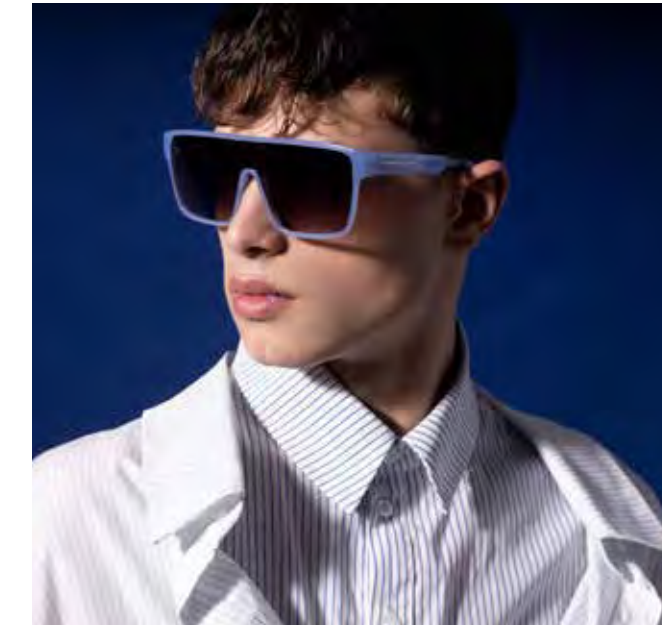


**CAROLINA LEMKE**

**B E R L I N**







SUNGLASSES





# Perfect Casual

There will always be a consensus in fashion regarding classic designs. Unisex style and timeless shapes, with a contemporary touch are included in the Perfect Casual collection. Warm tones and classic frames lend an urban look, a must-have both within and outside the city. From timeless silhouettes to classic frames, the Perfect Casual collection epitomizes the essence of modern fashion – blending urban style with classic elegance.







# Kass

CL9167 SG WT 01



Frame Color: Shiny black  
Lens Color: Gradient smoke  
Frame Material: Hand made - Acetate  
Handle Length: 145  
Lens Width: 46  
Nose Bridge: 22

841313157025

CL9167 SG WT 02



Frame Color: Shiny trasn l.champagne  
Lens Color: G15  
Frame Material: Hand made - Acetate  
Handle Length: 145  
Lens Width: 46  
Nose Bridge: 22

841313157032

CL9167 SG WT 03



Frame Color: Yellow orange demi  
Lens Color: Gradient brown  
Frame Material: Hand made - Acetate  
Handle Length: 145  
Lens Width: 46  
Nose Bridge: 22

841313157049



# Ireland

CL9207 SG 01



Frame Color: black  
Lens Color: Gradient smoke  
Frame Material: Hand made - Acetate  
Handle Length: 140  
Lens Width: 48  
Nose Bridge: 20

841313158718

CL9207 SG 02



Frame Color: Trans olive  
Lens Color: Gradient smoke  
Frame Material: Hand made - Acetate  
Handle Length: 140  
Lens Width: 48  
Nose Bridge: 20

841313158725

CL9207 SG 04



Frame Color: Brown mustard  
Lens Color: Gradient brown  
Frame Material: Hand made - Acetate  
Handle Length: 140  
Lens Width: 48  
Nose Bridge: 20

841313161763



# Jersey

CL9185 SG 01



Frame Color: Shiny Black  
Lens Color: Gradient smoke  
Frame Material: Hand made - Acetate  
Handle Length: 145  
Lens Width: 49  
Nose Bridge: 20

841313157711

CL9185 SG 02



Frame Color: Yellow brown demi  
Lens Color: solid light neon blue  
Frame Material: Hand made - Acetate  
Handle Length: 145  
Lens Width: 49  
Nose Bridge: 20

841313157728

CL9185 SG 03



Frame Color: Trans light champagne  
Lens Color: G15  
Frame Material: Hand made - Acetate  
Handle Length: 145  
Lens Width: 49  
Nose Bridge: 20

841313157735







# Bio Acetate

ECO-aware mini collection made from sustainable bio-acetate. The designs allow you to be inventive and create a super trendy and young look. This geometric style boasts a precise dose of vintage charm with its geometric cut and palette of shades. The use of sustainable bio-acetate provides an eco-friendly alternative to traditional plastics, reducing the environmental impact of production. The unique design offers a modern take on vintage styles, adding a contemporary twist to the traditional look.







# Carly

CL9133 SG BIO 01



Frame Color: black  
Lens Color: Smoke  
Frame Material: Hand made-Bio acetate  
Handle Length: 145  
Lens Width: 54  
Nose Bridge: 18

841313155922

CL9133 SG BIO 02



Frame Color: white  
Lens Color: Smoke  
Frame Material: Hand made- Acetate  
Handle Length: 145  
Lens Width: 54  
Nose Bridge: 18

841313155939

# Jules

CL9180 SG BIO 01



Frame Color: black  
Lens Color: Gradient smoke  
Frame Material: Hand made-Bio acetate  
Handle Length: 145  
Lens Width: 51  
Nose Bridge: 19

841313157636

CL9180 SG BIO 02



Frame Color: Marble nude  
Lens Color: Smoke  
Frame Material: Gradient dark brown/light brown  
Handle Length: 145  
Lens Width: 51  
Nose Bridge: 19

841313157643



# Eilish

CL9150 SG BIO 01



Frame Color: Black  
Lens Color: Gradient smoke  
Frame Material: Hand made-Bio acetate  
Handle Length: 145  
Lens Width: 54  
Nose Bridge: 19

841313157650

CL9150 SG BIO 02



Frame Color: Solid lilach  
Lens Color: Gradient smoke  
Frame Material: Hand made-Bio acetate  
Handle Length: 145  
Lens Width: 54  
Nose Bridge: 19

841313157667

CL9150 SG BIO 03



Frame Color: White  
Lens Color: Gradient smoke  
Frame Material: Hand made-Bio acetate  
Handle Length: 145  
Lens Width: 54  
Nose Bridge: 19

841313157674







# The Frameless

In the Frameless Collection, the choice of sunglasses ensures a restrained look that lets minimalism shine through. In addition to clean, classic lines, the designs influence the hottest fashion arenas and that is why they are so elegant and effortless to wear. This refined style allows the wearer to stand out while still maintaining a modern, effortless look.





# Zero

CL3268 SG 01



Frame Color: Matt black  
Lens Color: Smoke  
Frame Material: Metal  
Handle Length: 145  
Lens Width: 46  
Nose Bridge: 22

841313158350

CL3268 SG 02



Frame Color: Shiny light gold  
Lens Color: Smoke  
Frame Material: Metal  
Handle Length: 145  
Lens Width: 46  
Nose Bridge: 22

841313158367

CL3268 SG 03



Frame Color: Matt black  
Lens Color: brown red revo  
Frame Material: Metal  
Handle Length: 145  
Lens Width: 46  
Nose Bridge: 22

841313158374

# Tek

CL6800 SG 04



Frame Color: Gold  
Lens Color: Green to yellow  
Frame Material: Metal  
Handle Length: 145  
Lens Width: 46  
Nose Bridge: 22

841313128483

CL6800 SG 07



Frame Color: Gold  
Lens Color: Light brown with gold mirror  
Frame Material: Metal  
Handle Length: 145  
Lens Width: 46  
Nose Bridge: 22

841313128483

CL6800 SG 11



Frame Color: Gold  
Lens Color: gradient smoke  
Frame Material: Metal  
Handle Length: 145  
Lens Width: 46  
Nose Bridge: 22

841313139670



# Vally

CL3288 SG 01



Frame Color: Gold  
Lens Color: Gradient smoke to beige  
Frame Material: Metal  
Handle Length: 145  
Lens Width: 46  
Nose Bridge: 22

841313158695

CL3288 SG 02



Frame Color: Gold  
Lens Color: Gradient pink to trans  
Frame Material: Hand made - Acetate  
Handle Length: 145  
Lens Width: 46  
Nose Bridge: 22

841313158701





# Colorful Tint

With the collection of colored lenses, everyone will be able to pick the most vibrant accessory for their closet. Based on the latest trends in fashion, the designs combine iconic styles with dizzying colors to create the hipster look desired by many. The lenses are specially designed to provide a unique color effect. Each pair of lenses uses a special blend of pigments and filters to create a unique color palette. This allows people to create their own individual looks that reflect their personal style and the latest fashion trends.







# Hybrid

CL9138 SG 02



Frame Color:	Demi
Lens Color:	Gradient blue to transparent
Frame Material:	Hand made- Acetate
Handle Length:	145
Lens Width:	55
Nose Bridge:	18

841313154420

CL9138 SG 05



Frame Color:	Transparent dark grey
Lens Color:	Gradient pink to trans
Frame Material:	Hand made - Acetate
Handle Length:	145
Lens Width:	55
Nose Bridge:	18

841313154451

# Kori

CL9132 SG 03



Frame Color: Demi  
Lens Color: solid light neon blue  
Frame Material: Hand made - Acetate  
Handle Length: 145  
Lens Width: 46  
Nose Bridge: 22

841313153539

CL9132 SG 02



Frame Color: Demi  
Lens Color: solid strong orange  
Frame Material: Hand made - Acetate  
Handle Length: 145  
Lens Width: 46  
Nose Bridge: 22

841313153522



# Guru

CL9154 SG 03



Frame Color: Shiny Black  
Lens Color: solid dark yellow  
Frame Material: Hand made - Acetate  
Handle Length: 145  
Lens Width: 46  
Nose Bridge: 22

841313156189

CL9154 SG 02



Frame Color: yellow demi  
Lens Color: yuval purple  
Frame Material: Hand made - Acetate  
Handle Length: 145  
Lens Width: 46  
Nose Bridge: 22

841313156172

# Athletic Mood

Selecting sunglasses from the athletic collection will perfectly highlight your "uniqueness". Featuring pointed blades and bold colors, these sunglasses are sure to turn heads. The classic sporty presence takes center stage in the world of contemporary style with a perfect combination of a futuristic vibe. With their intricate designs, these sunglasses will be sure to make a statement about your individual style.











# Elixir

CL9170 SG 01



Frame Color: Black  
Lens Color: Gradient smoke  
Frame Material: Hand made- Acetate  
Handle Length: 145  
Lens Width: 55  
Nose Bridge: 20

841313157087

CL9170 SG 02



Frame Color: Neon trans green  
Lens Color: Gradient smoke  
Frame Material: Hand made - Acetate  
Handle Length: 145  
Lens Width: 55  
Nose Bridge: 20

841313157094

# Lit

CL3287 SG 01



Frame Color: Shiny Black  
Lens Color: Smoke  
Frame Material: Metal  
Handle Length: 135  
Lens Width: 57  
Nose Bridge: 20

841313158794

CL3287 SG 02



Frame Color: Shiny Black  
Lens Color: Silver mirror-smoke  
Frame Material: Metal  
Handle Length: 135  
Lens Width: 57  
Nose Bridge: 20

841313158800



# Jink

CL9151 SG 01



Frame Color: black  
Lens Color: Gradient smoke  
Frame Material: Hand made - Acetate  
Handle Length: 145  
Lens Width: 56  
Nose Bridge: 19

841313158947

CL9151 SG 02



Frame Color: blue  
Lens Color: Gradient smoke  
Frame Material: Hand made - Acetate  
Handle Length: 145  
Lens Width: 56  
Nose Bridge: 19

841313158954





# The Shield

For the boldest look at the party, you don't need much more than single-lens sunglasses. Oversized lenses are framed in mega fashionable frames for an iconic and super photogenic look. Designs with an unapologetic use of color that guarantee an electrifying dominant effect. Make a statement with your look and express your style with these attention-grabbing sunglasses – a must-have accessory for any fashionable wardrobe.







# Ocho

CL9134 SG 04



Frame Color: milky light blue  
Lens Color: gradient smoke  
Frame Material: Hand made - Acetate  
Handle Length: 145  
Lens Width: 137  
Nose Bridge: 0

841313154246

CL9134 SG 02



Frame Color: Dark trans champagne  
Lens Color: Gradient green to yellow  
Frame Material: Hand made - Acetate  
Handle Length: 145  
Lens Width: 137  
Nose Bridge: 0

841313154222

CL9134 SG 01



Frame Color: Shiny Black  
Lens Color: Gradient smoke  
Frame Material: Hand made - Acetate  
Handle Length: 145  
Lens Width: 137  
Nose Bridge: 0

841313154215

# Incognito

CL3258 SG 01



Frame Color: Shiny Black  
Lens Color: Gradient smoke  
Frame Material: T.R. 90  
Handle Length: 145  
Lens Width: 146  
Nose Bridge: 0

841313156967

CL3258 SG 02



Frame Color: Matt neon pink  
Lens Color: Gradient smoke  
Frame Material: T.R. 90  
Handle Length: 145  
Lens Width: 146  
Nose Bridge: 0

841313156974

CL3258 SG 03



Frame Color: Matt purple  
Lens Color: Gradient smoke  
Frame Material: T.R. 90  
Handle Length: 145  
Lens Width: 146  
Nose Bridge: 0

841313161916







# Danika

CL9176 SG 01



Frame Color: Shiny Black  
Lens Color: gradient smoke  
Frame Material: Hand made - Acetate  
Handle Length: 145  
Lens Width: 137  
Nose Bridge: 0

841313159470

CL9176 SG 02



Frame Color: white  
Lens Color: gradient smoke  
Frame Material: Hand made - Acetate  
Handle Length: 145  
Lens Width: 137  
Nose Bridge: 0

841313159487



# Retro Groove

Fashion-forward designs make up this sparkling collection. The collection's elements and details take you back in time – iconic frames full of presence and a unique style that cannot be overlooked. It's the look of maximum self-confidence that creates glam and style. Combining classic and modern details, this collection exudes timeless sophistication and a bold chic that demands to be noticed. With a focus on both functionality and luxury, this collection is perfect for the modern trendsetter looking to make a statement.







# Liya

CL3165 SG OPT 01



Frame Color: gold with crystal stones  
Lens Color: Gradient brown to nude  
Frame Material: Metal  
Handle Length: 140  
Lens Width: 47  
Nose Bridge: 20

841313152082

CL3165 SG OPT 02



Frame Color: shiny gold with colorful stones  
Lens Color: Gradient brown  
Frame Material: Metal  
Handle Length: 140  
Lens Width: 47  
Nose Bridge: 20

841313152099

# Vibe

CL3220 SG 01



Frame Color: Shiny light gold  
Lens Color: Gradient smoke  
Frame Material: Metal  
Handle Length: 145  
Lens Width: 49  
Nose Bridge: 20

841313156202

CL3220 SG 02



Frame Color: Shiny Black  
Lens Color: Gradient smoke  
Frame Material: Metal  
Handle Length: 145  
Lens Width: 49  
Nose Bridge: 20

841313156219

CL3220 SG 03



Frame Color: Shiny light gold  
Lens Color: Gradient brown  
Frame Material: Metal  
Handle Length: 145  
Lens Width: 49  
Nose Bridge: 20

841313156226





# Romeo

CL3278 SG 01



Frame Color: shiny light gold/shiny demi  
Lens Color: Gradient dark brown/light brown  
Frame Material: Metal  
Handle Length: 145  
Lens Width: 60  
Nose Bridge: 17

841313159142

CL3278 SG 02



Frame Color: shiny light gold/shiny black  
Lens Color: Gradient smoke  
Frame Material: Metal  
Handle Length: 145  
Lens Width: 60  
Nose Bridge: 17

841313159159



OPTIC







# woodies

An attractive design twist gives the glasses a warm feel. The collection brings a fresh, modern feel and combines classic frames with wooden handles designed in several warm shades. The result is a sophisticated and natural hipster look. In line with our sustainable line, we are preserving our eco system while maintaining the latest style. By using wooden handles, we are able to create a unique look that is not only fashionable, but sustainable as well. The combination of classic frames and wooden handles is a striking balance of fashion and sustainability that appeals to modern eco-conscious customers. This look emphasizes the importance of eco-friendly materials, while still staying fashionable, creating a perfect harmony between style and sustainability.







# Fedez

CL4247 OPT 01



Frame Color: Shiny black  
Lens Color: 0  
Frame Material: Hand made - Acetate  
Handle Length: 145  
Lens Width: 51  
Nose Bridge: 19

841313149594

CL4247 OPT 02



Frame Color: Trans light champagne  
Lens Color: 0  
Frame Material: Hand made - Acetate  
Handle Length: 145  
Lens Width: 51  
Nose Bridge: 19

841313149600

CL4247 OPT 03



Frame Color: Trans olive  
Lens Color: 0  
Frame Material: Hand made - Acetate  
Handle Length: 145  
Lens Width: 51  
Nose Bridge: 19

841313149617

# Rick

CL4304 OPT 01



Frame Color:	Shiny black
Lens Color:	0
Frame Material:	Hand made- Acetate
Handle Length:	145
Lens Width:	54
Nose Bridge:	17

841313149785

CL4304 OPT 02



Frame Color:	Transparent
Lens Color:	0
Frame Material:	Hand made- Acetate
Handle Length:	145
Lens Width:	54
Nose Bridge:	17

841313149792





# Riley

CL4310 OPT 01



Frame Color: shiny light gold  
Lens Color: 0  
Frame Material: Metal  
Handle Length: 140  
Lens Width: 54  
Nose Bridge: 17

841313152471

CL4310 OPT 02



Frame Color: silver  
Lens Color: 0  
Frame Material: Metal  
Handle Length: 140  
Lens Width: 54  
Nose Bridge: 17

841313152488



# The Color

Your eyewear is the ultimate first impression. The ability to recreate yourself constantly is super relevant in relation to your main accessory. With our The Color collection, you can refresh the appearance of your face with bright and vibrant colors. If you are a person of color, you can enter our candy store and choose a unique piece for yourself. The Color Collection allows you to express your unique style and personality. With bright and vibrant colors, you can stand out from the crowd and make a statement. Embrace the limitless possibilities of self-expression with The Color Collection and create a bold look that is true to you.







# Kenzo

CL4207 OPT 01



Frame Color: Shiny black  
Lens Color: 0  
Frame Material: Hand made - Acetate  
Handle Length: 145  
Lens Width: 49  
Nose Bridge: 19

841313147118

CL4207 OPT 02



Frame Color: Yellow orange demi  
Lens Color: 0  
Frame Material: Hand made - Acetate  
Handle Length: 145  
Lens Width: 49  
Nose Bridge: 19

841313147125

CL4207 OPT 03



Frame Color: Milky olive green  
Lens Color: 0  
Frame Material: Hand made - Acetate  
Handle Length: 145  
Lens Width: 49  
Nose Bridge: 19

841313147132

# Alice

CL4213 OPT 01



Frame Color: Black  
Lens Color: 0  
Frame Material: Hand made - Acetate  
Handle Length: 145  
Lens Width: 53  
Nose Bridge: 17

841313147699

CL4213 OPT 02



Frame Color: Red purple pink demi  
Lens Color: 0  
Frame Material: Hand made - Acetate  
Handle Length: 145  
Lens Width: 53  
Nose Bridge: 17

841313147705

CL4213 OPT 03



Frame Color: Neon pink light pink  
Lens Color: 0  
Frame Material: Hand made - Acetate  
Handle Length: 145  
Lens Width: 53  
Nose Bridge: 17

841313147712







# Jovi

CL4256 OPT 01



Frame Color: Shiny black  
Lens Color: 0  
Frame Material: Hand made - Acetate  
Handle Length: 145  
Lens Width: 49  
Nose Bridge: 19

841313150484

CL4256 OPT 02



Frame Color: Black brown green demi  
Lens Color: 0  
Frame Material: Hand made - Acetate  
Handle Length: 145  
Lens Width: 49  
Nose Bridge: 19

841313150491

CL4256 OPT 03



Frame Color: Colorful demi  
Lens Color: 0  
Frame Material: Hand made - Acetate  
Handle Length: 145  
Lens Width: 49  
Nose Bridge: 19

841313157247



# Black & Bold

A fashionable update of the sophisticated style of the eyeglasses results in frames that have presence while maintaining clean and elegant lines. Black and Bold features striking, unapologetic shapes that make it feel crisp and super relevant. The frames feature bold silhouettes with a modern twist and offer a unique look that stands out from the traditional styles. The sleek lines and minimalistic details give the glasses a sense of sophistication and timelessness, while the striking angles add a contemporary touch. These frames are perfect for those looking to make a statement and stand out from the crowd with their eyewear.







# Ivy

CL4204 OPT 01



Frame Color: Black  
Lens Color: 0  
Frame Material: Hand made - Acetate  
Handle Length: 145  
Lens Width: 52  
Nose Bridge: 17

841313146999

CL4204 OPT 02



Frame Color: Brown beige blue demi  
Lens Color: 0  
Frame Material: Hand made - Acetate  
Handle Length: 145  
Lens Width: 52  
Nose Bridge: 17

841313147002

CL4204 OPT 05



Frame Color: Milky purple  
Lens Color: 0  
Frame Material: Hand made - Acetate  
Handle Length: 145  
Lens Width: 52  
Nose Bridge: 17

841313161336

# Maxi

CL4250 OPT 01



Frame Color: Black  
Lens Color: 0  
Frame Material: Hand made - Acetate  
Handle Length: 145  
Lens Width: 49  
Nose Bridge: 21

841313147699

CL4250 OPT 03



Frame Color: Trans olive  
Lens Color: 0  
Frame Material: Hand made - Acetate  
Handle Length: 145  
Lens Width: 49  
Nose Bridge: 21

841313147705

CL4250 OPT 05



Frame Color: Blue  
Lens Color: 0  
Frame Material: Hand made - Acetate  
Handle Length: 145  
Lens Width: 49  
Nose Bridge: 21

841313147712



# Jovi

CL4256 OPT 01



Frame Color: Shiny black  
Lens Color: 0  
Frame Material: Hand made - Acetate  
Handle Length: 145  
Lens Width: 49  
Nose Bridge: 19

841313150484

CL4256 OPT 02



Frame Color: Black brown green demi  
Lens Color: 0  
Frame Material: Hand made - Acetate  
Handle Length: 145  
Lens Width: 49  
Nose Bridge: 19

841313150491

CL4256 OPT 03



Frame Color: Colorful demi  
Lens Color: 0  
Frame Material: Hand made - Acetate  
Handle Length: 145  
Lens Width: 49  
Nose Bridge: 19

841313157247







# Honey crystal

Eyeglasses designed in a unique and clean style that elevates “geek chic” to another level. The collection is characterized by a rainbow of transparent crystal colors in warm shades of amber and honey for a sophisticated bohemian touch. The glasses are designed to appeal to individuals who appreciate the beauty of subtle details. The collection is also designed to be comfortable and lightweight, making it ideal for everyday wear. Each pair of eyeglasses is crafted with a contemporary style, emphasizing bold yet sophisticated designs that blend seamlessly with individual’s personality and style.







# Satin

CL4255 OPT 01



Frame Color: Shiny black  
Lens Color: 0  
Frame Material: Hand made - Acetate  
Handle Length: 140  
Lens Width: 51  
Nose Bridge: 18

841313149686

CL4255 OPT 02



Frame Color: Light trans brown  
Lens Color: 0  
Frame Material: Hand made - Acetate  
Handle Length: 140  
Lens Width: 51  
Nose Bridge: 18

841313149693

CL4255 OPT 03



Frame Color: Brown stripes demi  
Lens Color: 0  
Frame Material: Hand made - Acetate  
Handle Length: 140  
Lens Width: 51  
Nose Bridge: 18

841313149709

# Rosso

CL4263 OPT 01



Frame Color: Shiny black  
Lens Color: 0  
Frame Material: Hand made- Acetate  
Handle Length: 145  
Lens Width: 52  
Nose Bridge: 17

841313150859

CL4263 OPT 02



Frame Color: Black light yellow demi  
Lens Color: 0  
Frame Material: Hand made- Acetate  
Handle Length: 145  
Lens Width: 52  
Nose Bridge: 17

841313150866

CL4263 OPT 03



Frame Color: Trans light champagne  
Lens Color: 0  
Frame Material: Hand made- Acetate  
Handle Length: 145  
Lens Width: 52  
Nose Bridge: 17

841313150873





# Shook

CL4317 OPT 02



Frame Color: Yellow demi  
Lens Color: 0  
Frame Material: Hand made - Acetate  
Handle Length: 145  
Lens Width: 46  
Nose Bridge: 22

841313156417

CL4317 OPT 03



Frame Color: Milky peach  
Lens Color: 0  
Frame Material: Hand made - Acetate  
Handle Length: 145  
Lens Width: 46  
Nose Bridge: 22

841313161411

CL4317 OPT 04



Frame Color: Milky musterd  
Lens Color: 0  
Frame Material: Hand made - Acetate  
Handle Length: 145  
Lens Width: 46  
Nose Bridge: 22

841313161411



# The Pilot

Our legendary Aviator frames are updated according to the hottest trends. Renewed iconic designs make a distinct and effortless fashion statement. Whether you choose a meticulous suit or jeans and a t-shirt – you can count on them to do the job for you wherever you land. The frames are designed with an ageless style that can be worn with any type of look, making them suitable for any occasion. The frames also use advanced materials to ensure a comfortable and lightweight fit, while the iconic designs are updated with modern elements to provide a timeless fashion statement. The result? A look that is both classic and modern, effortlessly making a distinct fashion statement no matter the occasion.





# Mist

CL4164 OPT 01



Frame Color: Shiny black  
Lens Color: 0  
Frame Material: Metal  
Handle Length: 145  
Lens Width: 53  
Nose Bridge: 17

841313136839

CL4164 OPT 02



Frame Color: Yellow orange demi  
Lens Color: 0  
Frame Material: Metal  
Handle Length: 145  
Lens Width: 53  
Nose Bridge: 17

841313136846

CL4164 OPT 03



Frame Color: Milky olive green  
Lens Color: 0  
Frame Material: Metal  
Handle Length: 145  
Lens Width: 53  
Nose Bridge: 17

841313148207

# Baran

CL4189 OPT 01



Frame Color: Shiny black  
Lens Color: 0  
Frame Material: Hand made - Acetate  
Handle Length: 145  
Lens Width: 54  
Nose Bridge: 16

841313143332

CL4189 OPT 03



Frame Color: Transparent  
Lens Color: 0  
Frame Material: Hand made - Acetate  
Handle Length: 145  
Lens Width: 54  
Nose Bridge: 16

841313148290

CL4189 OPT 04



Frame Color: Trans olive  
Lens Color: 0  
Frame Material: Hand made - Acetate  
Handle Length: 145  
Lens Width: 54  
Nose Bridge: 16

841313153980





# Remy

CL4316 OPT 01



Frame Color: Black  
Lens Color: 0  
Frame Material: Hand made - Acetate  
Handle Length: 145  
Lens Width: 51  
Nose Bridge: 19

841313154963

CL4316 OPT 02



Frame Color: Demi 1YWP4B002  
Lens Color: 0  
Frame Material: Hand made - Acetate  
Handle Length: 145  
Lens Width: 51  
Nose Bridge: 19

841313154970

CL4316 OPT 03



Frame Color: Transparent dark grey  
Lens Color: 0  
Frame Material: Hand made - Acetate  
Handle Length: 145  
Lens Width: 51  
Nose Bridge: 19

841313154987



# Geometri Chic

With geometric and angular designs that create a precise and light appearance. Combined with the multitude of details on the frames, the minimalist lines create a sophisticated look with a touch of retro flair. These glasses will frame your face perfectly and add some classic flair to your unique look. The combination of the angular shapes with the details of the frames creates a look that is both modern and classic. The precise lines provide a lightweight feel that allows the glasses to sit comfortably on your face, while the retro details give it a timeless yet unique appearance.





# Jenni

CL4258 OPT 01



Frame Color: Black-gold  
Lens Color: 0  
Frame Material: Metal  
Handle Length: 145  
Lens Width: 51  
Nose Bridge: 19

841313150880

CL4258 OPT 02



Frame Color: Rose gold  
Lens Color: 0  
Frame Material: Metal  
Handle Length: 145  
Lens Width: 51  
Nose Bridge: 19

841313152488

# Hudson

CL4267 OPT 01



Frame Color: Black  
Lens Color: 0  
Frame Material: Metal  
Handle Length: 145  
Lens Width: 49  
Nose Bridge: 20

841313150415

CL4267 OPT 02



Frame Color: Demi 1YWP4B002  
Lens Color: 0  
Frame Material: Metal  
Handle Length: 145  
Lens Width: 49  
Nose Bridge: 20

841313154970

CL4267 OPT 03



Frame Color: Transparent dark grey  
Lens Color: 0  
Frame Material: Metal  
Handle Length: 145  
Lens Width: 49  
Nose Bridge: 20

841313150439





# Famous

CL4281 OPT 01



Frame Color: Shiny light gold/shiny black  
Lens Color: 0  
Frame Material: Metal  
Handle Length: 145  
Lens Width: 53  
Nose Bridge: 17

841313151009

CL4281 OPT 02



Frame Color: Shiny light gold  
Lens Color: 0  
Frame Material: Metal  
Handle Length: 145  
Lens Width: 53  
Nose Bridge: 17

841313151016